

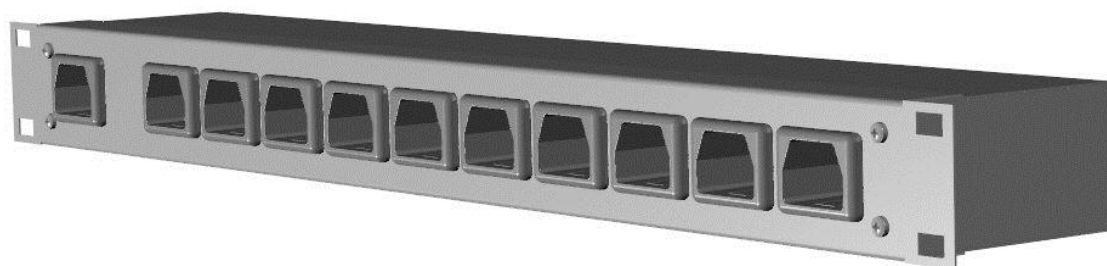
## Power Strip 10x 400 Vdc -each output with DC rated connector!

### Description

The Power Strip PS10 is a DC rated power distribution unit with DC rated connectors.

### Features

- 10 DC rated distribution outputs (total current max 20A)
- In and output connectors DC rated.
- Locked safety connectors.
- Compact
- Horizontal or Vertical mounting



	PS10	
<b>Input</b>		
Input voltage range	300 – 400 Vdc	
Input current	Max 20A	
<b>Output</b>		
Output current	1-20A (Max 20A total current)	
Number of outputs	10	
Short circuit protection	No	
<b>Mechanical data</b>		
Weight	1.1 kg	
Width	19 "	
Height	1U	
Depth	80 mm	
Enclosure	IP 20	
<b>CE</b>		
Safety	EN/IEC 60950, class 1	